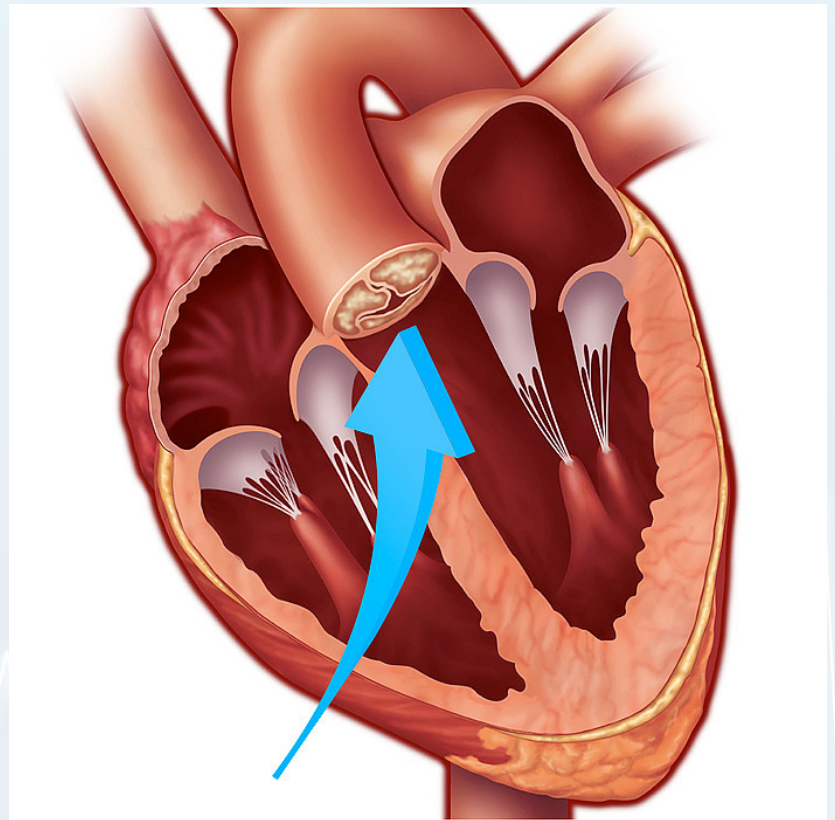


WHAT IS IT?

Central Aortic Systolic Pressure or **CASP** is the blood pressure at the root of the aorta (the largest artery in the body).

CASP VS BRACHIAL PRESSURE

Around the world, the measurement of Central Aortic Systolic Pressure is recognized as a stronger, more accurate indicator of what is happening in the vascular system and more closely tied to predicting cardiac events.



WHAT ARE THE RISKS?

High aortic pressure can result in endothelial dysfunction and eventual *atherosclerosis*, *cardiovascular disease*, or a *major cardiac event*